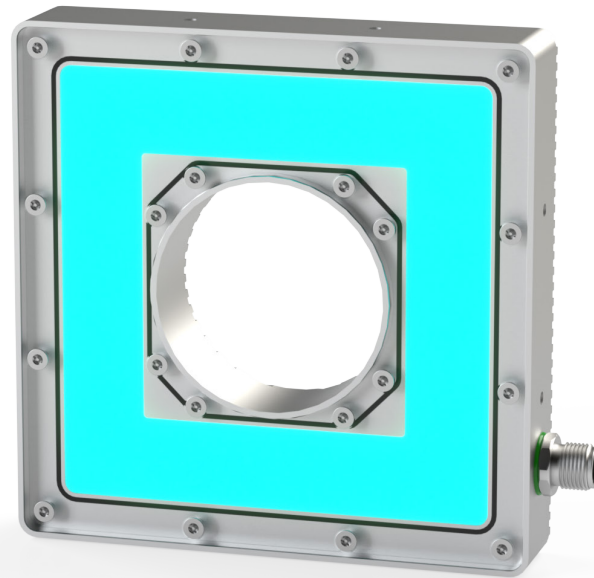


# Ring · RD1 SERIES RGB

lumher



 <p>24 V DC</p>	 <p>PWM DIMABLE</p>	 <p>NOT CASCADABLE</p>	 <p>M12A</p>	 <p>RGB</p>	 <p>POLARIZED</p>
 <p>MACHINE VISION</p>	 <p>SIGNALING</p>	 <p>IP65</p>	 <p>CLASS III</p>	 <p>36 MONTHS</p>	 <p>EU MADE IN SPAIN</p>

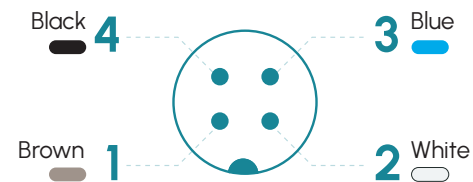
## Technical specifications

Power supply voltage	24 Vdc $\pm$ 5%	
Polarity	Positive PNP (common: 0 Vdc)	
PWM regulation (Max 25 KHz)	min. 0%	max. 100%
Max. number of cascadable modules	This luminaire is not cascadable	
Electrical protections	Transient overvoltages	YES
	Polarity reversal	YES
	Current sablizer	YES
Angle of aperture	Semidiffuse	110°
	Ultradiffuse	110°
Wavelength	R = 625 nm G = 520 nm B = 465 nm	
IP Rating	IP40, IP54 o IP65	
Protection type	Clase III	
Operating temperature	-10 a +40 °C	
Body material	Anodized aluminum	
Diffuser material	Polycarbonate	
Connection types	M12A connector	
Standards	RoHs, CE	

## Connection

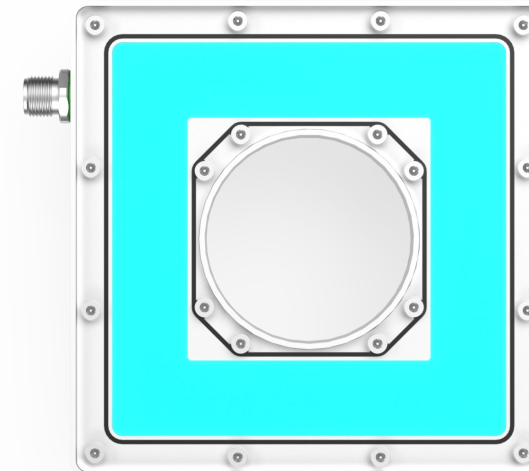
M12A input - Cable	Power
Pin 1 - Brown	+24 Vdc (Green)
Pin 2 - White	+24 Vdc (Blue)
Pin 3 - Blue	0 Vdc
Pin 4 - Black	+24 Vdc (Red)

### M12A Male



## Anchors

P00R4,M6D16

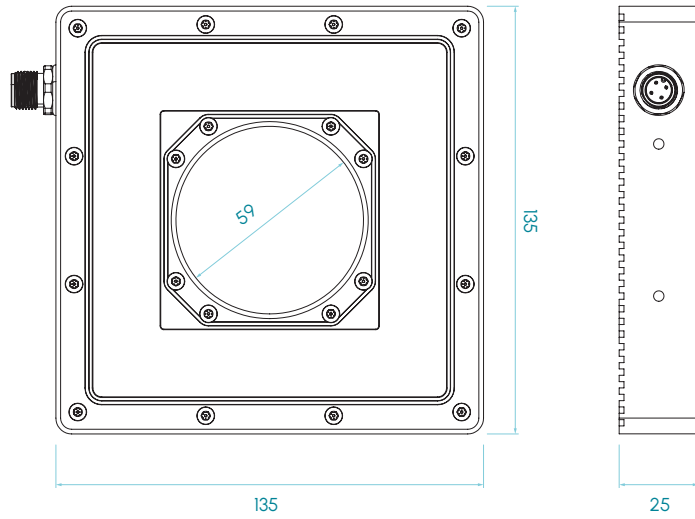


# RD1 · RGB

# lumher

## Dimensions

RD1



## Selection guide

RD 1 P Q 5 Y

Diffuser

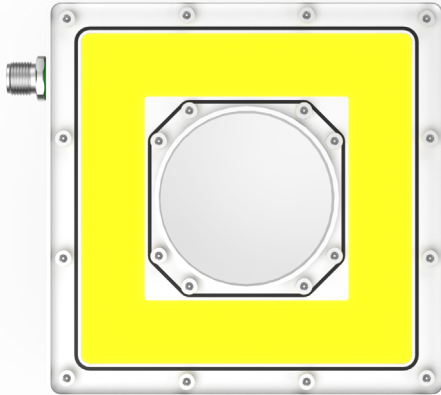
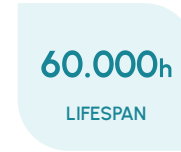
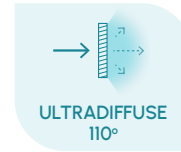
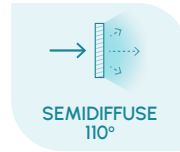
- C - Semidiffuse
- U - Ultradiffuse
- M - Semidiffuse polarized
- G - Ultradiffuse polarized

Dimensions in mm

# RD1 · RGB

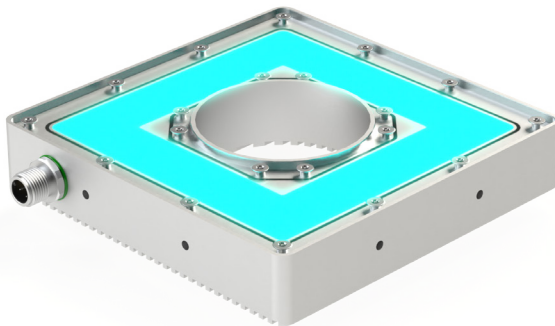
**lumher**

## Model RD1 · RGB



### Table of characteristics

	Width (mm)	Height (mm)	Weight (g)	Luminous flux <sup>(1)</sup> (lm)			Power consumed (W)
				R	G	B	
RD 1...	135	135	615	38	103	29	7,2



(1)The luminous flux (lm) is before the diffuser.