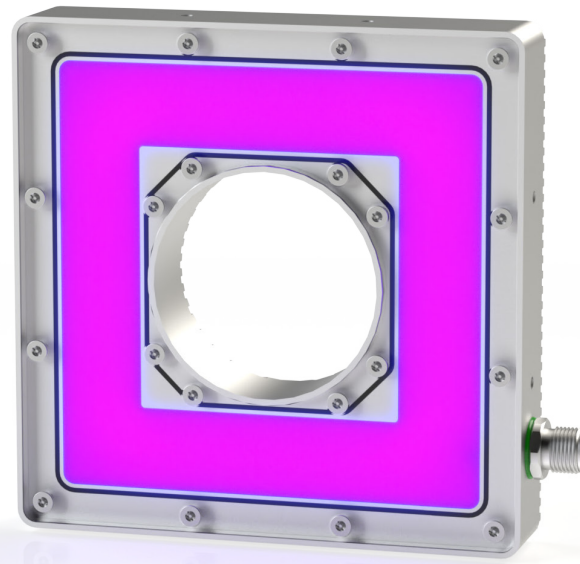


# Ring · RD1 SERIES Ultraviolet 365 nm

lumher



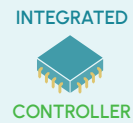
24 V  
DC



IP65



POWER 1x  
STROBE 4x



36  
MONTHS



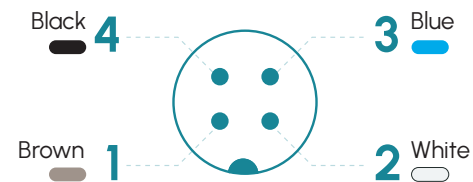
## Technical specifications

Power supply voltage	24 Vdc ±5%	
Trigger input	24 Vdc PNP	
Max. on time	Power = unlimited	Strobe = 10 ms
Max. working cycle	Power = 1	Strobe = 1/6
Max. number of cascable modules	This luminaire is not cascable	
Wavelength	Ultraviolet	365 nm
Angle of aperture	Transparent	110°
Electrical protections	Transient overvoltages	YES
	Polarity reversal	YES
	Current sabilizer	YES
IP Rating	IP65	
Protection type	Class III	
Operating temperature	-10 a +40 °C	
Body material	Anodized aluminum	
Diffuser material	PMMA plastic	
Connection types	M12A connector	
Standards	RoHs, CE	

## Connection

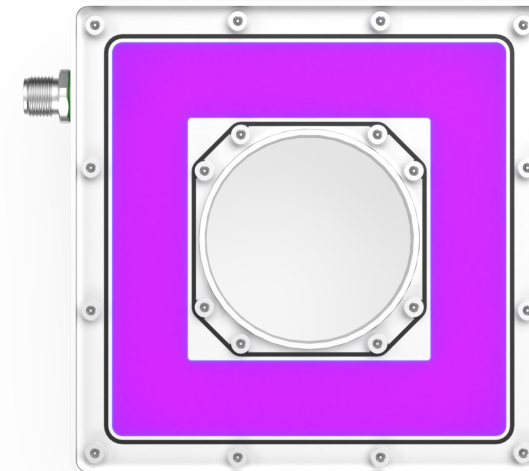
M12A input	Power	Master Power - Strobe
Pin 1 - Brown	+24 Vdc	+24 Vdc
Pin 2 - White	Not connected	Not connected
Pin 3 - Blue	0 Vdc	0 Vdc
Pin 4 - Black	Not connected	Trigger PNP

### M12A Male



## Anchors

B00S1

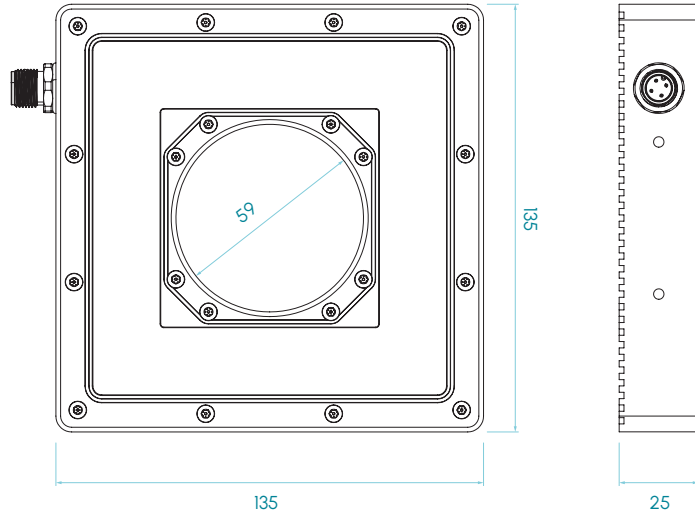


RD1 · 365 nm

lumher

## Measures

RD1



## Selection guide

RD 1 U 5 T Y

Working mode

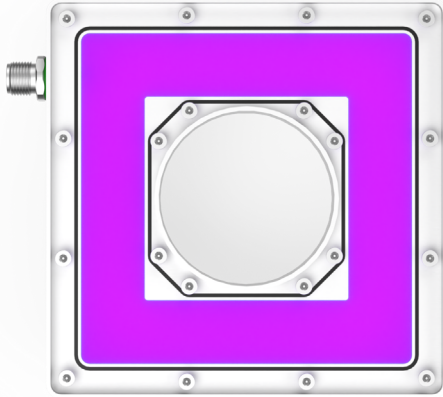
- P - Power
- Z - Master Power - Strobe

Measures in mm

# RD1 · 365 nm

**lumher**

## Model RD1 · Ultraviolet 365 nm



**365nm**

ULTRAVIOLET



TRANSPARENT  
110°

PHOTOBIOLOGICAL  
RISK

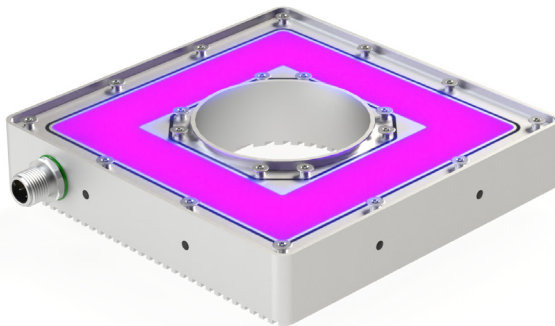
RG2 - MEDIUM

**15.000h**

LIFESPAN

### Table of characteristics

	Width	Length	Weight	Radiated power <sup>(1)</sup>		Power consumed	
	(mm)	(mm)	(g)	(W)		(W)	
				POWER	STROBE	POWER	STROBE
RD 1 ...	135	135	615	3,7	14,9	7,6	30,4



(1) The radiated power (W) is before the diffuser.