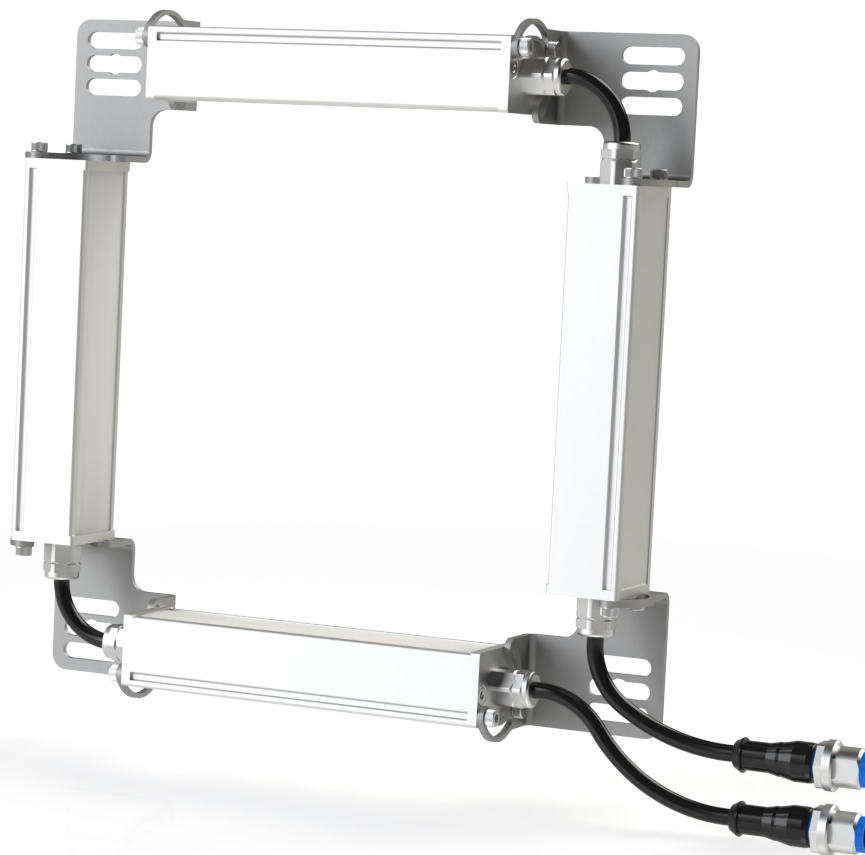


# Multishot · P4DM SERIES Infrared 850 nm

lumher



24 V  
DC

NOT  
CASCADABLE

CABLE  
M12A

MACHINE VISION

CONTINUOUS 1x

IP40  
IP65

36  
MONTHS

EU  
MADE IN SPAIN

## Technical specifications

Power supply voltage	24 Vdc $\pm$ 5%	
Trigger input	24 Vdc PNP / NPN	
Max. on time	Power = unlimited	
Max. working cycle	Power = 1	
Max. consumption Trigger input	1,5 mA	
Max. number of cascadable modules	This luminaire is not cascadable	
Wavelength	Infrared	850 nm
Beam angle	Semidiffuse	60°
	Ultradiffuse	110°
Electrical protections	Transient overvoltages	YES
	Polarity reversal	YES
	Current sabilizer	YES
IP Rating	IP40 o IP65	
Protection type	Class III	
Operating temperature	-10 °C to +40 °C	
Storage temperature	0°C to +60 °C	
Max. relative humidity	80% (without condensation)	
Body material	Anodized aluminum	
Side cover material	Anodized aluminum	
Diffuser material	Polycarbonate	
Connection types	Cable with M12A connector	
Standards	RoHs, CE	

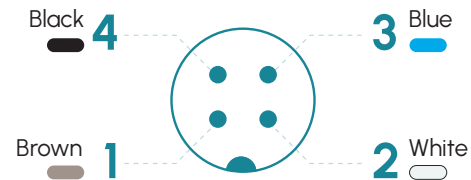
# P4DM · 850nm

## Connection

Entry 1 M12A - Cable	Power
Pin 1 - Brown	+24 Vdc
Pin 2 - White	Trigger - section 1
Pin 3 - Blue	0 Vdc
Pin 4 - Black	Trigger - section 2

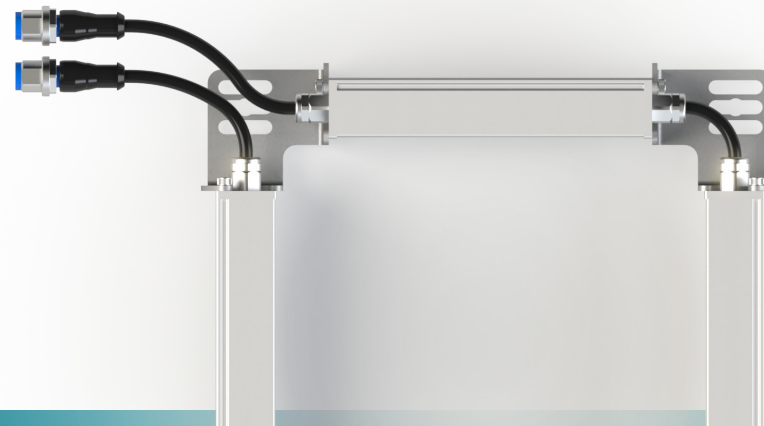
Entry 2 M12A - Cable	Power
Pin 1 - Brown	+24 Vdc
Pin 2 - White	Trigger - section 3
Pin 3 - Blue	0 Vdc
Pin 4 - Black	Trigger - section 4

### M12A Male



### Fixings

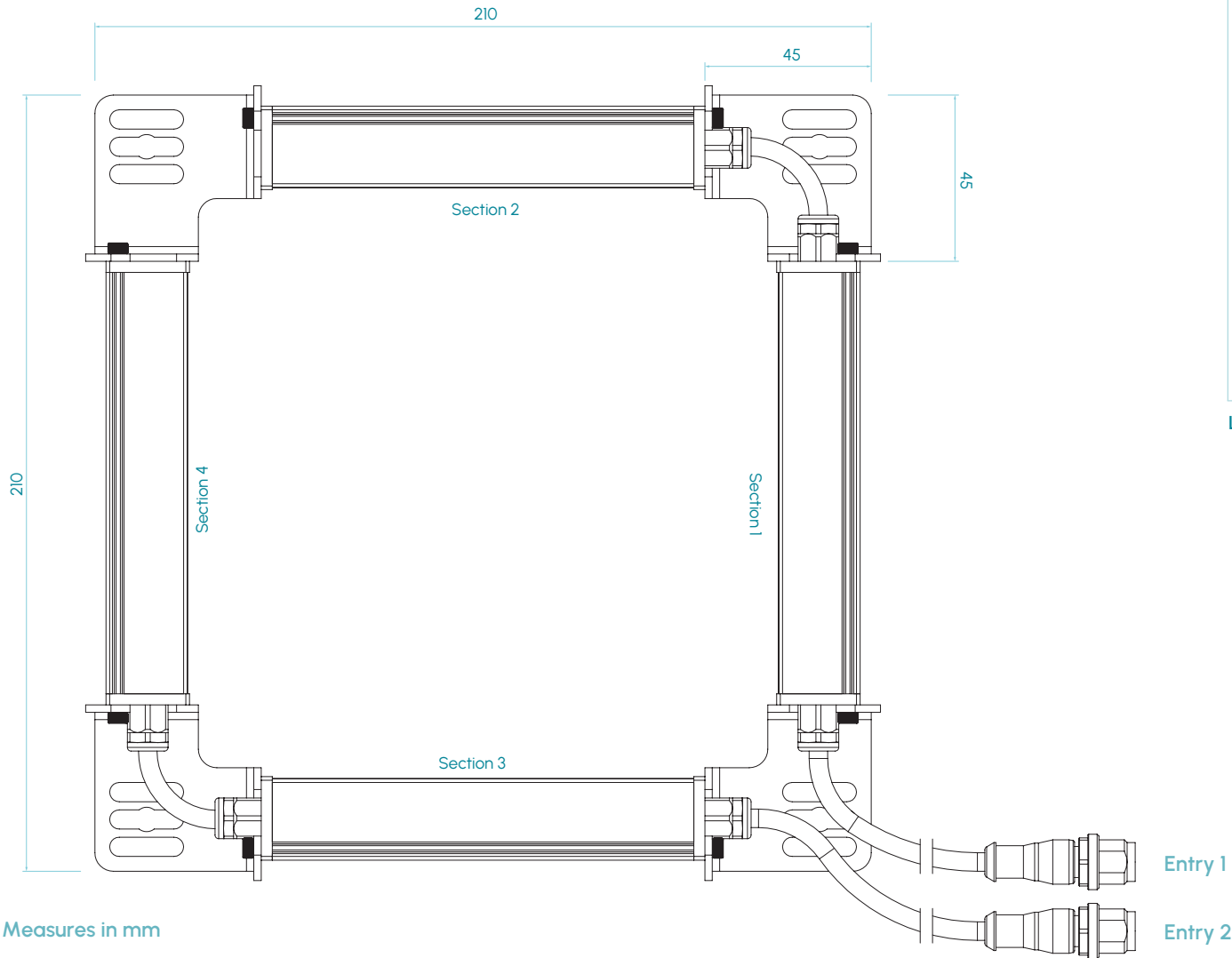
P00R4, M6D16



# lumher

## Measures

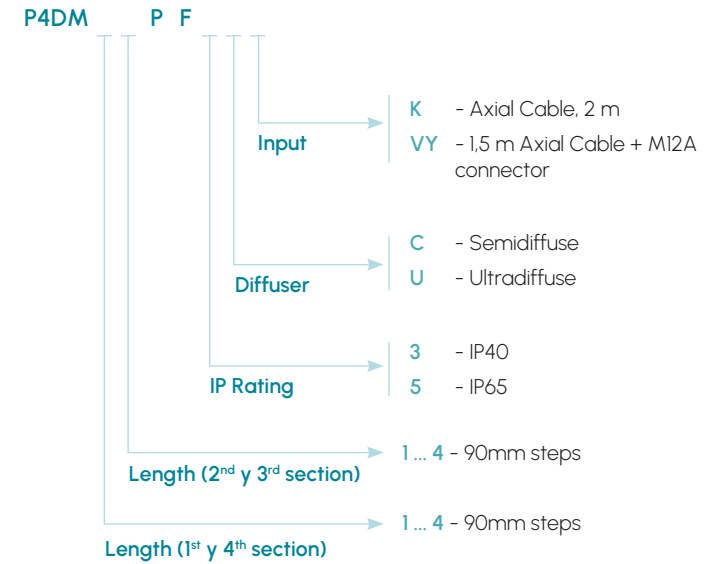
IP40 / IP65



Measures in mm

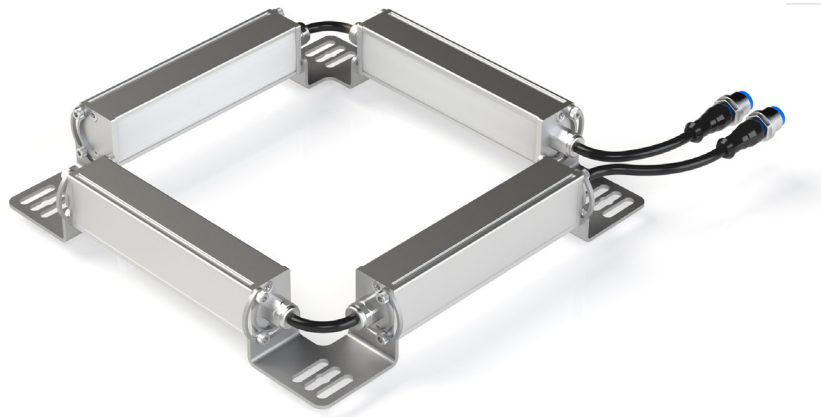
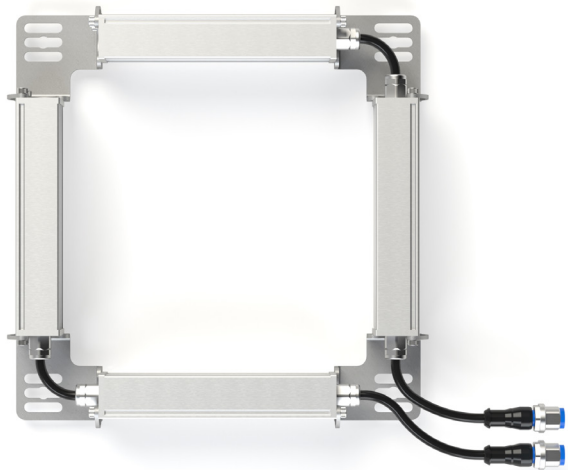
# P4DM · 850nm

## Selection guide



**lumher**

## Model P4DM · Infrared 850 nm



**850nm**

INFRARED



SEMIDIFFUSE  
60°



ULTRADIFFUSE  
110°

PHOTOBIOLOGICAL  
RISK

RG1 - LOW

**60.000h**

LIFESPAN

### Table of characteristics

	Width (mm)	Height (mm)	Weight (g)	Radiated power <sup>(1)</sup> (W)	Power consumed (W)
P4DM 11	210	210	520	1,6	4,0
P4DM 12	210	300	616	2,4	6,0
P4DM 13	210	390	712	3,2	8,0
P4DM 14	210	480	808	4,0	10,0
P4DM 22	300	300	904	3,2	8,0
P4DM 23	300	390	1.000	4,0	10,0
P4DM 24	300	480	1.096	4,8	12,0
P4DM 33	390	390	1.192	4,8	12,0
P4DM 34	390	480	1.288	5,6	14,0
P4DM 44	480	480	1.384	6,4	16,0

(1) Radiated power (W) is before the diffuser.

**lumher**