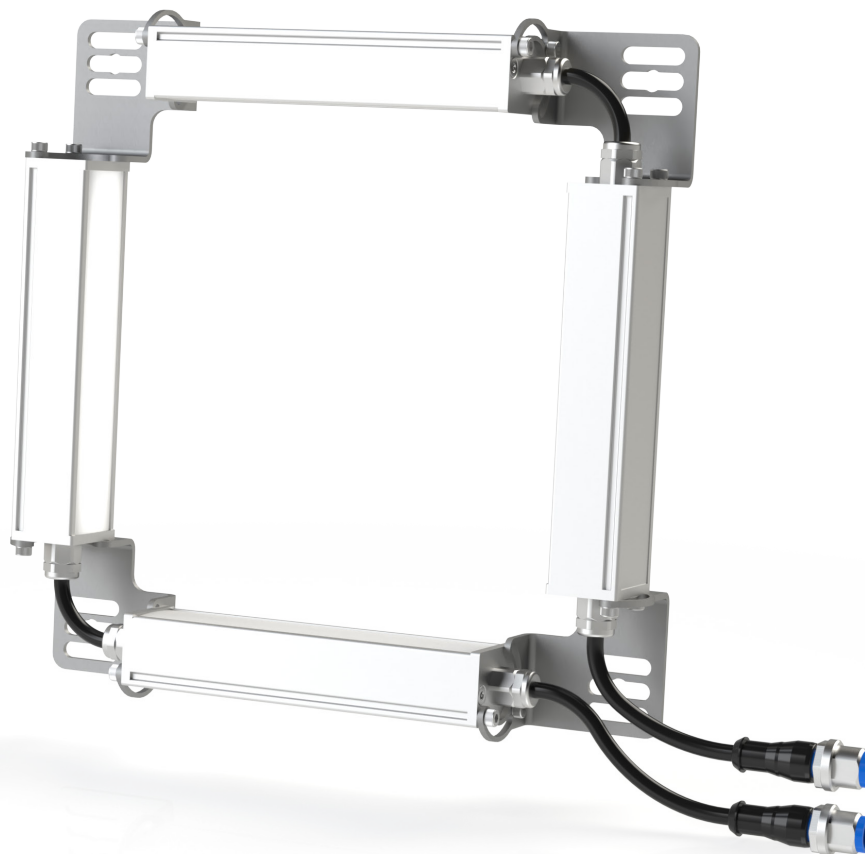


Multishot · P4DM SERIES White 5000K

lumher



24 V
DC

NOT
CASCADABLE

CABLE
M12A

MACHINE VISION

CONTINUOUS 1x

IP40
IP65

36
MONTHS

EU
MADE IN SPAIN

Technical specifications

Power supply voltage	24 Vdc ±5%	
Trigger input	24 Vdc PNP / NPN	
Max. on time	Power = unlimited	
Max. working cycle	Power = 1	
Max. consumption Trigger input	1,5 mA	
Max. number of cascadable modules	This luminaire is not cascadable	
Wavelength	White	5000 K
Beam angle	Semidiffuse Ultradiffuse	60° 110°
Electrical protections	Transient overvoltages Polarity reversal Current sabilizer	YES YES YES
IP Rating	IP40 o IP65	
Protection type	Class III	
Operating temperature	-10 °C to +40 °C	
Storage temperature	0°C to +60 °C	
Max. relative humidity	80% (without condensation)	
Body material	Anodized aluminum	
Side cover material	Anodized aluminum	
Diffuser material	Polycarbonate	
Connection types	Cable with M12A connector	
Standards	RoHs, CE	

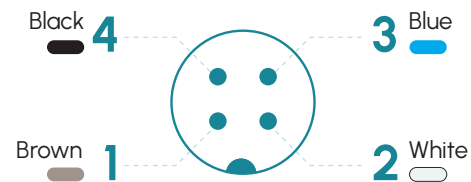
P4DM · 5000K

Connection

Entry 1 M12A - Cable	Power
Pin 1 - Brown	+24 Vdc
Pin 2 - White	Trigger - section 1
Pin 3 - Blue	0 Vdc
Pin 4 - Black	Trigger - section 2

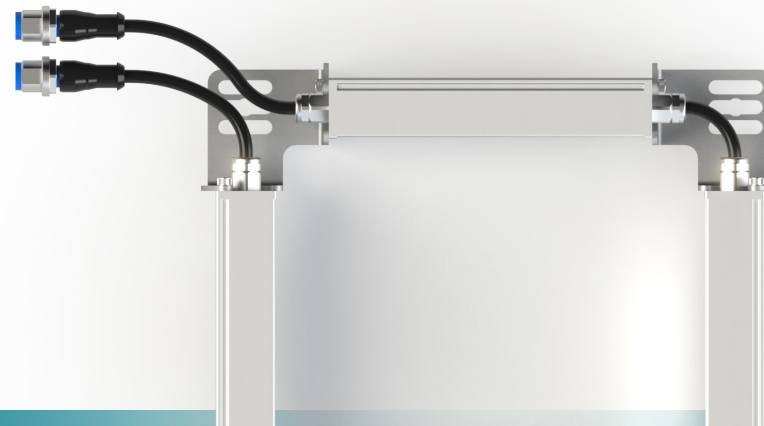
Entry 2 M12A - Cable	Power
Pin 1 - Brown	+24 Vdc
Pin 2 - White	Trigger - section 3
Pin 3 - Blue	0 Vdc
Pin 4 - Black	Trigger - section 4

M12A Male



Fixings

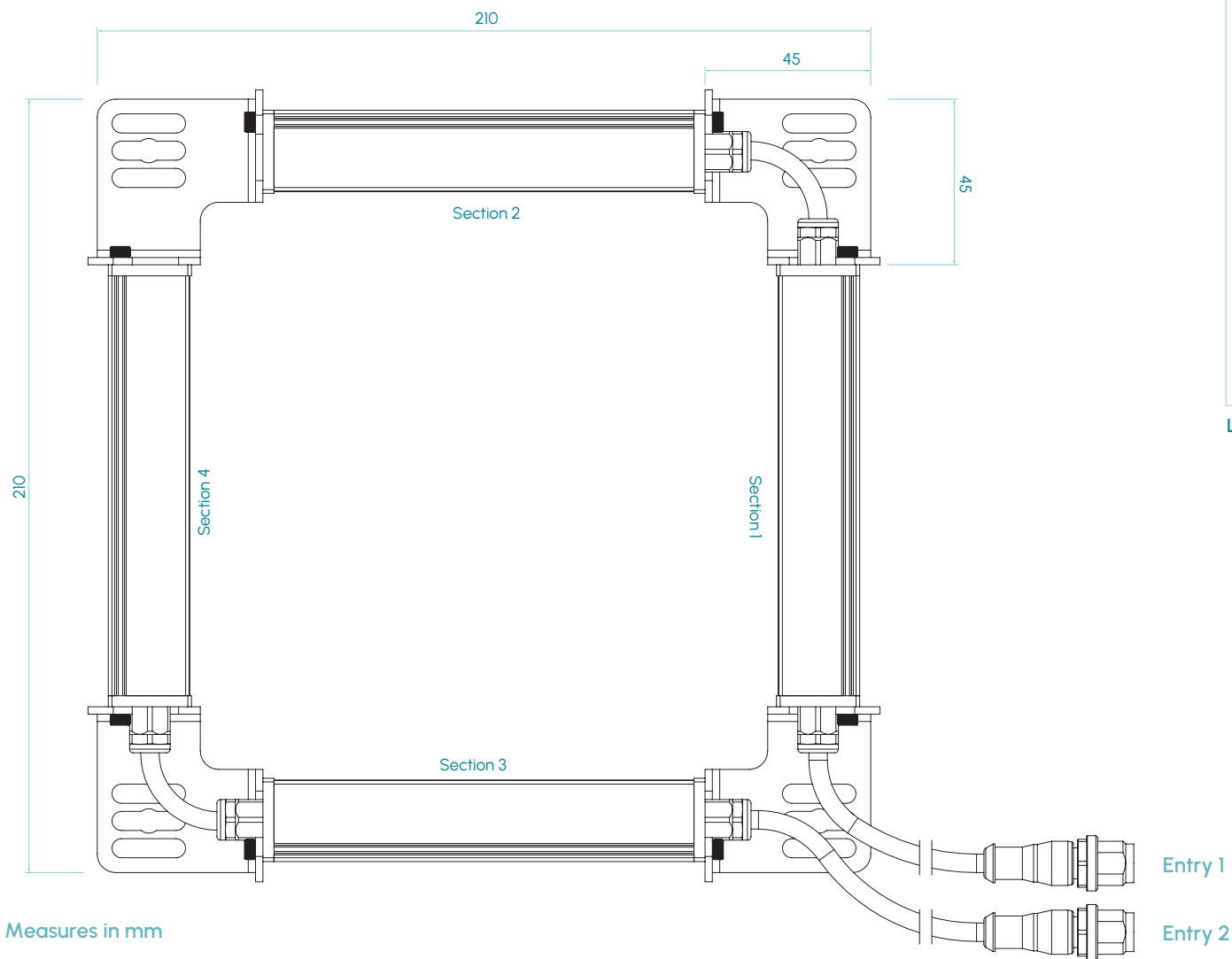
P00R4, M6D16



lumher

Measures

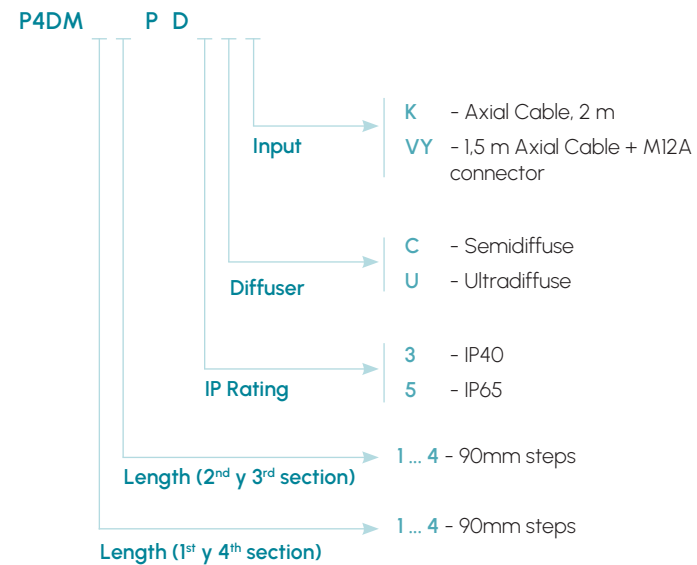
IP40 / IP65



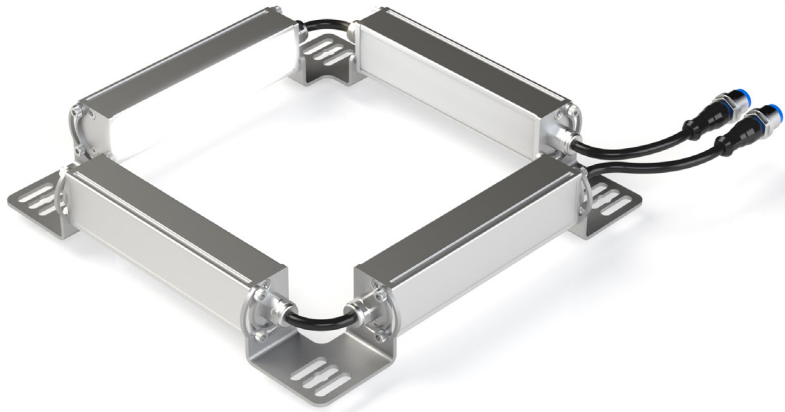
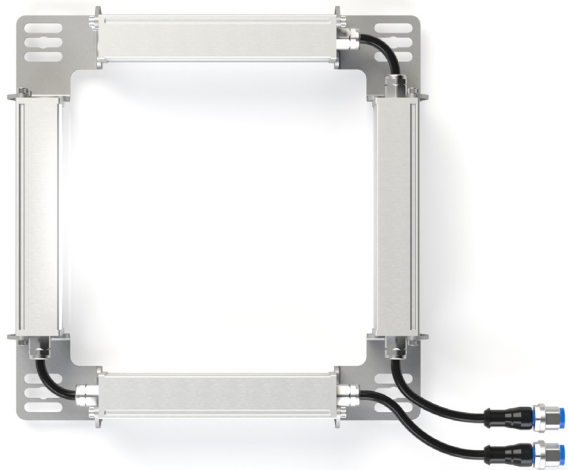
Measures in mm

P4DM · 5000K

Selection guide



lumher



5000K

WHITE



SEMIDIFFUSE
60°



ULTRADIFFUSE
110°

PHOTOBIOLOGICAL
RISK

RG1 - LOW

60.000h

LIFESPAN

Table of characteristics

	Width (mm)	Height (mm)	Weight (g)	Luminous flux ⁽¹⁾ (lm)	Power consumed (W)
P4DM 11	210	210	520	1.216	7,6
P4DM 12	210	300	616	1.824	11,4
P4DM 13	210	390	712	2.432	15,2
P4DM 14	210	480	808	3.040	19,0
P4DM 22	300	300	904	2.432	15,2
P4DM 23	300	390	1.000	3.040	19,0
P4DM 24	300	480	1.096	3.648	22,8
P4DM 33	390	390	1.192	3.648	22,8
P4DM 34	390	480	1.288	4.256	26,6
P4DM 44	480	480	1.384	4.864	30,4

(1) Luminous flux (lm) is before the diffuser.