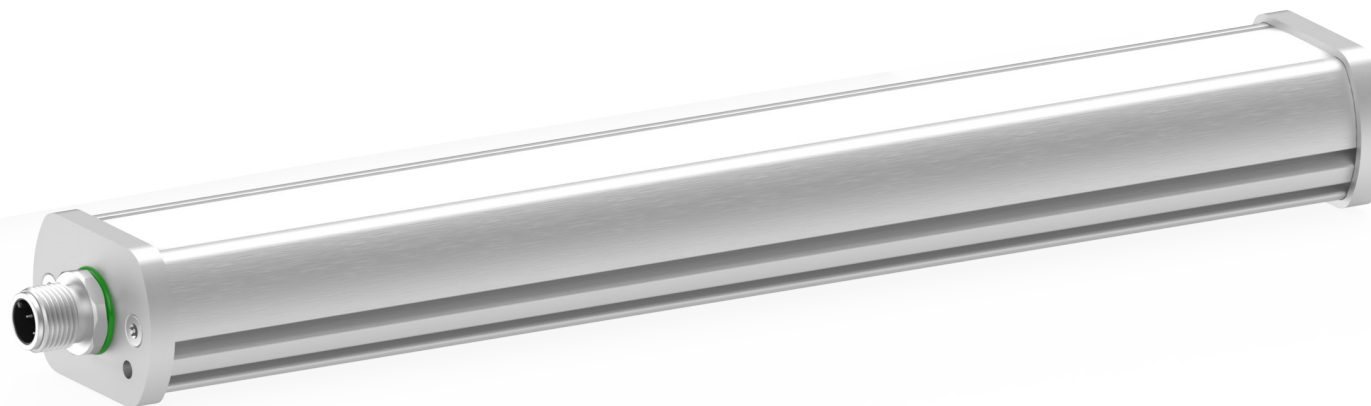


# Functional · FR Series White 5000K

lumher



24 V  
DC

155  
lm/W

NOT  
CASCADABLE

75 mm  
INCREMENTAL

FUNCTIONAL

CABLE  
M12A

POWER 1x  
ECO 0.5x

IP40  
IP65

PWM  
DIMABLE

CLASS III

36  
MONTHS

EU  
MADE IN SPAIN

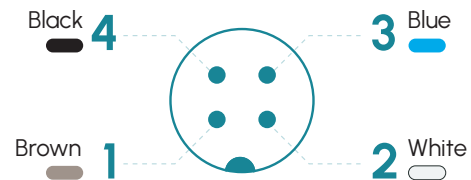
## Technical specifications

Power supply voltage	24 Vdc $\pm$ 5%	
Luminous efficiency	155 lm/W	
PWM regulation (Max 25 KHz)	min. 0%	max. 100%
Wavelength	Daylight white	5000K
Angle of aperture	Semidiffuse	60°
	Ultradiffuse	110°
Max. number of cascadable modules	This luminaire is not cascadable	
Electrical protections	Transient overvoltages	YES
	Polarity reversal	YES
	Current stabilizer	YES
Colour Rendering Index (CRI)	$\geq$ 80	
IP Rating	IP40 or IP65	
Protection type	Class III	
Operating temperature	POWER version	-10 a +40 °C
	ECO version	-10 a +50° C
Body material	Anodized aluminum	
Side cover material	Anodized aluminum	
Diffuser material	Polycarbonate	
Connection types	M12A, 2m cable, M12A connector with cable	
Standards	RoHs, CE	

## Connection

Input M12A - Cable	Power	Eco	Dual
Pin 1 - Brown	+24 Vdc	+24 Vdc	+24 Vdc
Pin 2 - White	Not connected	Not connected	24 Vdc = Power 0 Vdc = Eco
Pin 3 - Blue	0 Vdc	0 Vdc	0 Vdc
Pin 4 - Black	Not connected	Not connected	Not connected

### M12A Male



## Fixings

F00G2, F00G4, F00R1, M6D16

# FR · 5000K

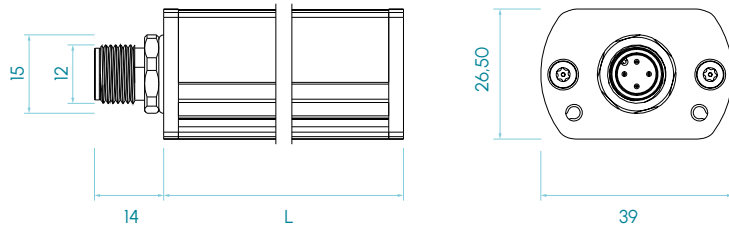


# lumher

## Measures

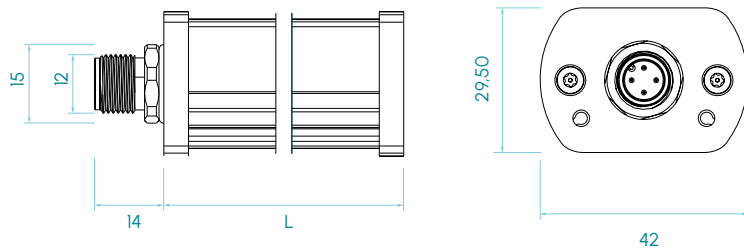
IP40

M12A axial version



IP65

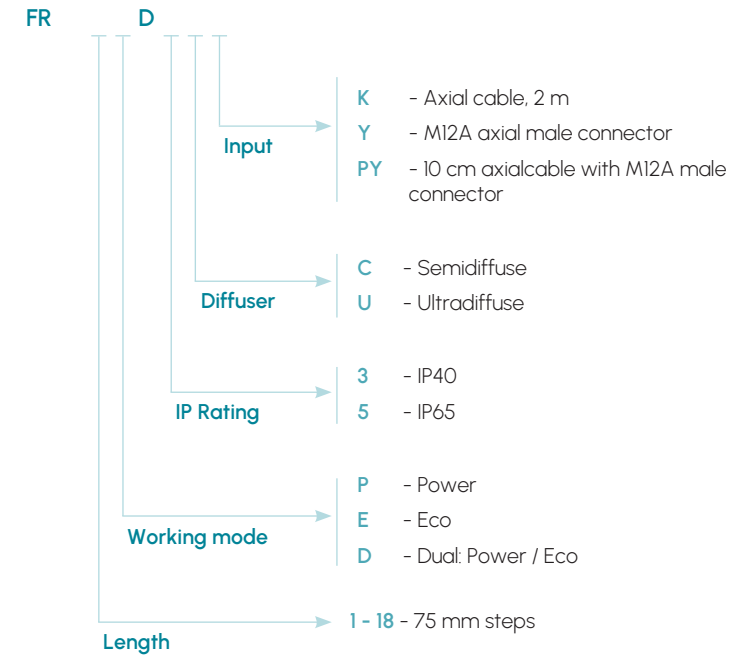
M12A axial version



Measures in mm

# FR · 5000K

## Selection guide



**lumher**

# FR Series · Daylight white 5000K



FR

5000K

DAYLIGHT  
WHITE

SEMIDIFFUSE  
60°

ULTRADIFFUSE  
110°

PHOTOBIOLOGICAL  
RISK

RG1 - LOW

60.000h

LIFESPAN

Table of characteristics

	Length L1 (mm)	Weight (g)	Illuminance Ev (lx) @ 1 m				Luminous flux <sup>(1)</sup> (lm)		Power consumed (W)	
			SEMIDIFFUSE		ULTRADIFFUSE		POWER	ECO	POWER	ECO
			POWER	ECO	POWER	ECO				
FR 01...	105	224	88	50	53	30	372	186	2,4	1,2
FR 02...	180	344	176	100	105	60	744	372	4,8	2,4
FR 03...	255	464	264	150	158	89	1.116	558	7,2	3,6
FR 04...	330	584	352	200	210	119	1.488	744	9,6	4,8
FR 05...	405	704	440	250	263	149	1.860	930	12,0	6,0
FR 06...	480	824	528	300	315	179	2.232	1.116	14,4	7,2
FR 07...	555	944	616	350	368	209	2.604	1.302	16,8	8,4
FR 08...	630	1.064	705	400	421	238	2.976	1.488	19,2	9,6
FR 09...	705	1.184	793	450	473	268	3.348	1.674	21,6	10,8
FR 10...	780	1.304	881	500	526	298	3.720	1.860	24,0	12,0
FR 11...	855	1.424	969	550	578	328	4.092	2.046	26,4	13,2
FR 12...	930	1.544	1.057	600	631	358	4.464	2.232	28,8	14,4
FR 13...	1.005	1.664	1.145	650	684	387	4.836	2.418	31,2	15,6
FR 14...	1.080	1.784	1.233	699	736	417	5.208	2.604	33,6	16,8
FR 15...	1.155	1.904	1.321	749	789	447	5.580	2.790	36,0	18,0
FR 16...	1.230	2.024	1.409	799	841	477	5.952	2.976	38,4	19,2
FR 17...	1.305	2.144	1.497	849	894	507	6.324	3.162	40,8	20,4
FR 18...	1.380	2.264	1.585	899	946	536	6.696	3.348	43,2	21,6

(1) The luminous flux (lm) is before the diffuser