

# Backlight · BD1 SERIES Infrared 850 nm

lumher



24 V  
DC

NOT  
CASCADABLE

IP65

M12A

MACHINE VISION

POWER 1x  
STROBE 4x

INTEGRATED  
CONTROLLER

36  
MONTHS

EU  
MADE IN SPAIN

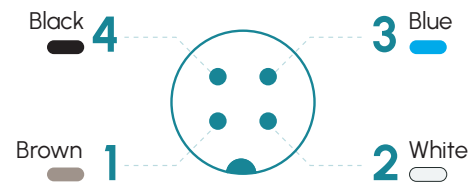
## Technical specifications

Power supply voltage	24 Vdc ±5%	
Trigger input	24 Vdc PNP	
Max. on time	Power = unlimited	Strobe = 10 ms
Max. working cycle	Power = 1	Strobe = 1/6
Max. number of cascable modules	This luminaire is not cascable	
Wavelength	Infrared	850 nm
Angle of aperture	Semidiffuse	110°
	Ultradiffuse	110°
Electrical protections	Transient overvoltages	YES
	Polarity reversal	YES
	Current stabilizer	YES
IP Rating	IP65	
Protection type	Class III	
Operating temperature	-10 a +40 °C	
Body material	Anodized aluminum	
Diffuser material	PMMA plastic	
Connection types	M12A connector	
Standards	RoHs, CE	

## Connection

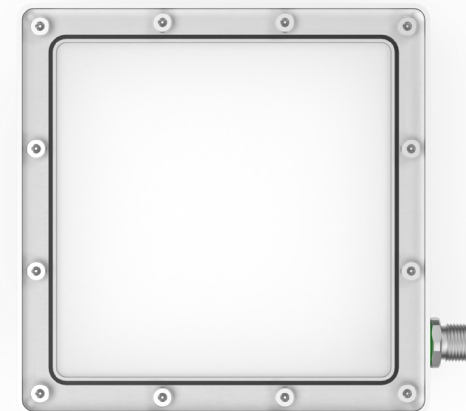
M12A input	Power	Master Power - Strobe
Pin 1 - Brown	+24 Vdc	+24 Vdc
Pin 2 - White	Not connected	Not connected
Pin 3 - Blue	0 Vdc	0 Vdc
Pin 4 - Black	Not connected	Trigger PNP

### M12A Male



## Anchors

B00S1

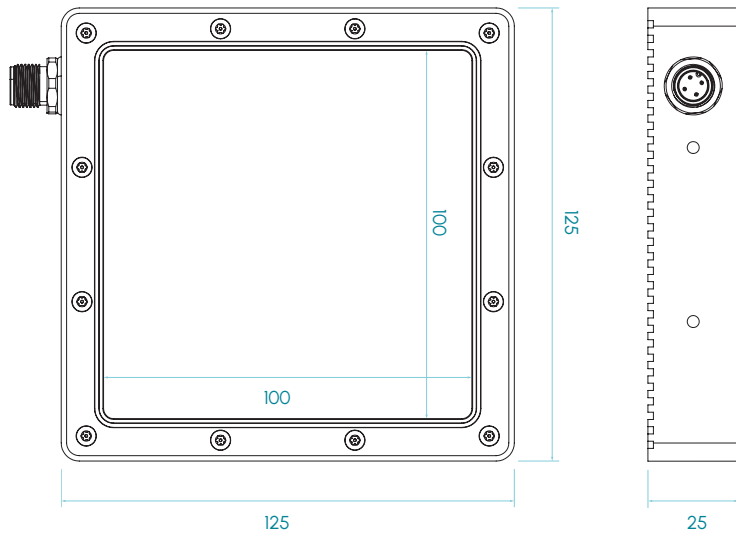


BD1 · 850 nm

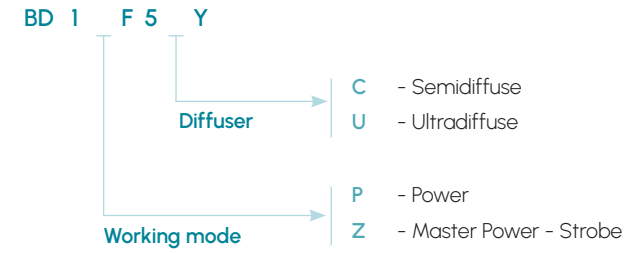
**lumher**

## Dimensions

BD1



## Selection guide

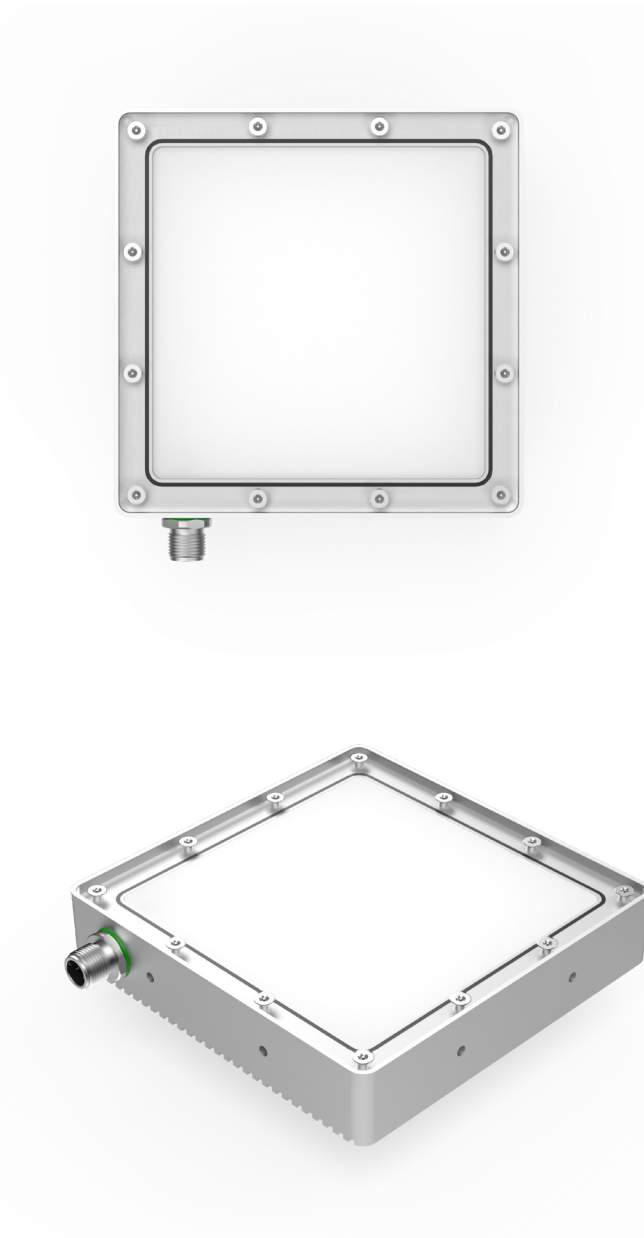


Dimensions in mm

# BD1 · 850 nm

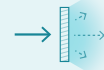
**lumher**

## Model BD1 · Infrared 850 nm



**850nm**

INFRARED



SEMIDIFFUSE  
110°



ULTRADIFFUSE  
110°

PHOTOBIOLOGICAL  
RISK

RG1 - LOW

**60.000h**

LIFESPAN

### Table of characteristics

	Width	Length	Weight	Radiated power <sup>(1)</sup>		Power consumed	
	(mm)	(mm)	(g)	(W)		(W)	
				POWER	STROBE	POWER	STROBE
BD 1 ...	125	125	500	2,8	11,2	7,0	28,0

(1) Radiated power (W) is before the diffuser.